



# Wireless Presentation System User's Manual

Version: 1.0

Date: 2008.1.11

## Table of Contents

1.	Overview .....	3
2.	First Setup of the Wireless Presentation System .....	4
3.	Client Utility .....	9
3.1	Description of Wireless Projector Application .....	9
3.2	Start/Stop Presentation .....	11
3.3	Start/Stop Playing Video .....	11
3.4	Administrator Page .....	12
3.5	Searching for a Server .....	13
3.6	Repeat .....	13
3.7	System Information .....	14
3.8	About .....	15
3.9	Exit Program .....	15
4.	Web Management .....	15
4.1	Home Page .....	15
4.2	Download Software .....	16
4.3	Administrator Login Page .....	18
4.4	System Status .....	18
4.5	Network Setup .....	20
4.6	Projection Setup .....	21
4.7	Change Passwords .....	22
4.8	Reset to Default .....	23
4.9	Firmware Upgrade .....	25
4.10	Reboot System .....	26
4.11	Logout .....	27

## 1. Overview

The Wireless Presentation System is easily installed, convenient and user-friendly. With the Wireless Presentation System, you can wirelessly display presentations from your personal computer via a projector.

### **Plug & Play**

The Wireless Presentation System is a plug-and-play device. The wireless presenter drivers are downloadable from any personal computer with wireless capabilities.

### **Flexibility**

With the Wireless Presentation System, you no longer have to worry about the hassle of cable swapping. The Wireless Presentation System is compatible with all types of projectors. After downloading the software, the projector wireless system will instantly display your presentation on the screen via the projector with just one click of the mouse.

### **Performance**

The Wireless Presentation System has the ability to deliver real-time animation up to 1280 x 768 resolution in 24-bit color depth. The Wireless Presentation System features an easy-to-use, web-based user-interface, which simplifies configurations and wireless security setup.

### **Security**

To protect unwanted users from accessing the presentation content, the Wireless Presentation System automatically assigns a randomized login code. It also offers additional security with WEP 64/128 encryption.

### **Intelligent search function**

Once installed in participating laptops/PCs, the Wireless Presentation System will automatically search all available connected users within the wireless LAN coverage area.

## Features

- Wireless presentation with any projector without cable swapping.
- Projects your video streaming files through WLAN.
- Compatible with projectors that come with standard VGA connectors.
- A single mouse click switches between each presenter's display.
- PowerPoint presentations, image and other applications are displayed in real-time.
- Supports resolutions up to 1280 x 768 with 24-bit color.
- No installation CD required. Software is downloaded directly from the Wireless Presentation System to the computer.
- Provides session security login and a wireless WEP key to protect presentation content.
- User-friendly, web-based interface for easy configuration.
- Supports static-IP and DHCP servers.

## 2. First Setup of the Wireless Presentation System

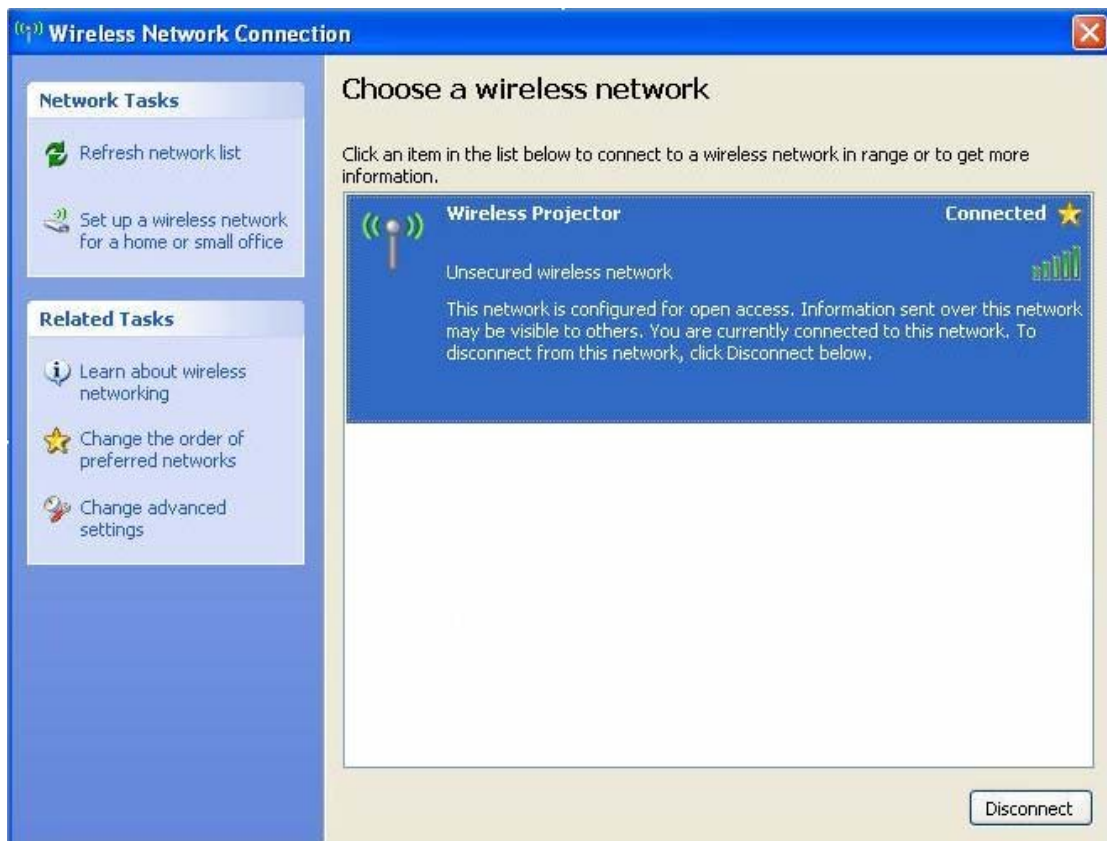
- 1) Connect the wireless module to the projector, and ensure that the connection is fitted tightly.
- 2) Ensure the wireless module LED light is green
  - Ensure the WLAN card/internal wireless chipset of your personal computer is enabled. Once enabled, connect your PC through the wireless connection.
  - Move the mouse to the bottom right corner of the screen and double



click on the icon



- Select and connect to the “Wireless Projector” network. If “Wireless Projector” is not seen, ensure that the PC is within near range (Up to 300 feet / 100 meter, depend on environment) of the projector and the module is selected to be active. If disconnected, please click “View Wireless Networks” to connect the Wireless Module (Wireless Projector)



3) When the default menu (see below) is projected on the screen, this

indicates that the wireless module is now ready to be used.

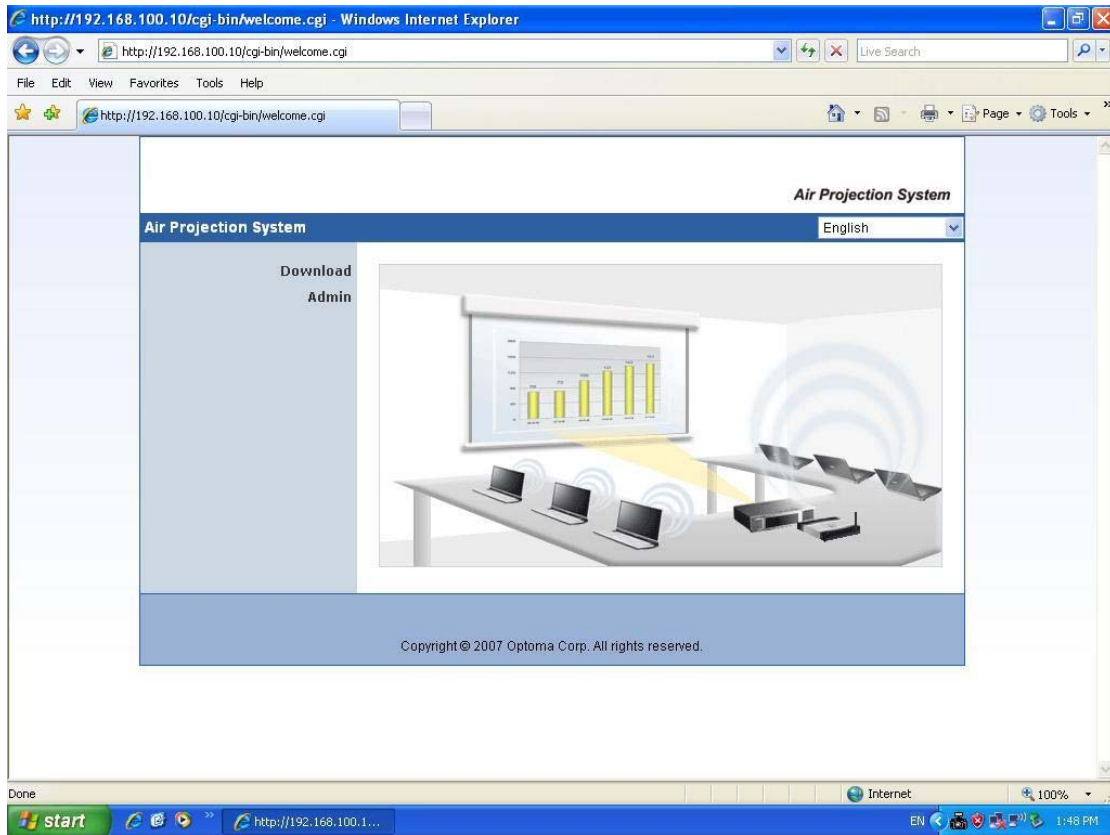
## *Wireless Projector*

### Quick Guide

1. Make sure your WLAN is enabled, and connect to the website.
  2. Open your browser, or enter the IP address (refer to below server IP address)
  3. Click on "Download", and execute the installation program.
  4. Make sure your personal firewall allows software of WAP to pass through!
  5. Click the "Play" button, and enter the LOGIN CODE to start projection!
- 

SSID: Wireless projector  
Server IP: 192.168.100.10  
Channel: 4  
WEP: Disable  
Resolution: 1024 x 768

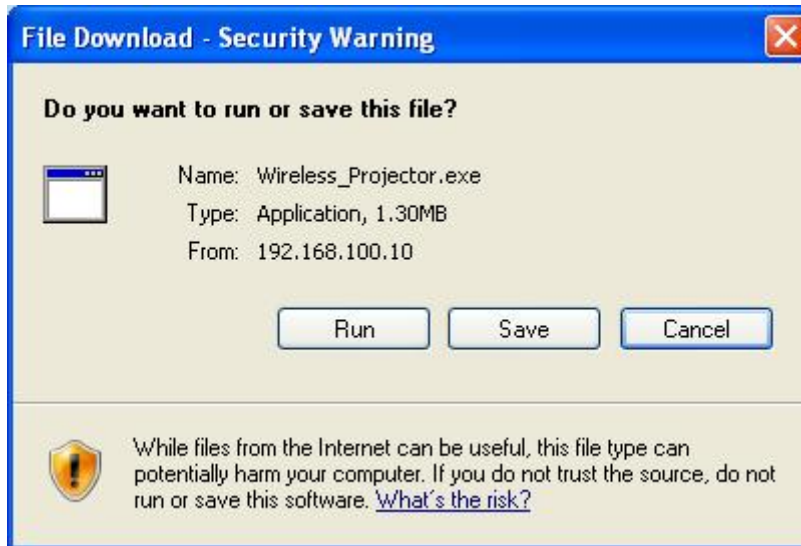
- 4) Open your web browser to go to Optoma home page.
  - The default IP address of the Wireless Projector system is **192.168.100.10**, which is also shown on the bottom left corner of projected screen.



- 5) Click the download button on the panel located on the left side of the webpage. This will take you to a second page that prompts you for a password. Click the download button to continue. **Please note: no password is needed for 'user' login.**



- 6) When the 'File Download' appears below, click "Run" to execute the installation program.



- After installing the program, the Wireless Projector shortcut will appear on the PC desktop.
- Note: To ensure proper installation, make sure the personal firewall on the PC does not block the software.



- 7) Enter the 'LOGIN CODE' which is provided in the up left corner of the projected image.



8) After clicking the "OK" button, it will start projecting automatically.







### 3. Client Utility

















#### 3.1 Description of Wireless Projector Application

1) After successfully logging in, the user interface application of the Wireless Projector system appears (see below):




2) The features of the various buttons of the wireless projector application are listed below.

 Presentation Mode	 Video Mode
 Start projecting	 Pause projecting


 Stop projecting	 Refresh projecting screen
 Start Playing Video	 Stop Playing Video
 Pause Playing video	 Open Video File
 Audio volume ON.	 Audio volume OFF
 Audio volume strength bar	
 Video time bar	
 Server Login Code	
 This icon will blink when wireless data/video is playing	
 This icon will blink when wireless data/video is playing	
 Function menu	
 Minimize the program	
 Exit the program	

Note: For security, the Server Login Code randomly changes as users log in and out of the presentations as the default.

### 3.2 Start/ Stop Presentation

Click  to start wireless presentation.


Click  to stop wireless presentation.

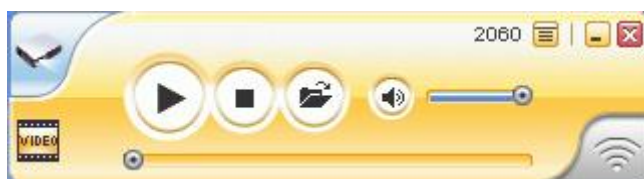
Click  to pause presentation that will hide any activities of your PC screen. Once you click "Play" button again, screen projection will be resumed.



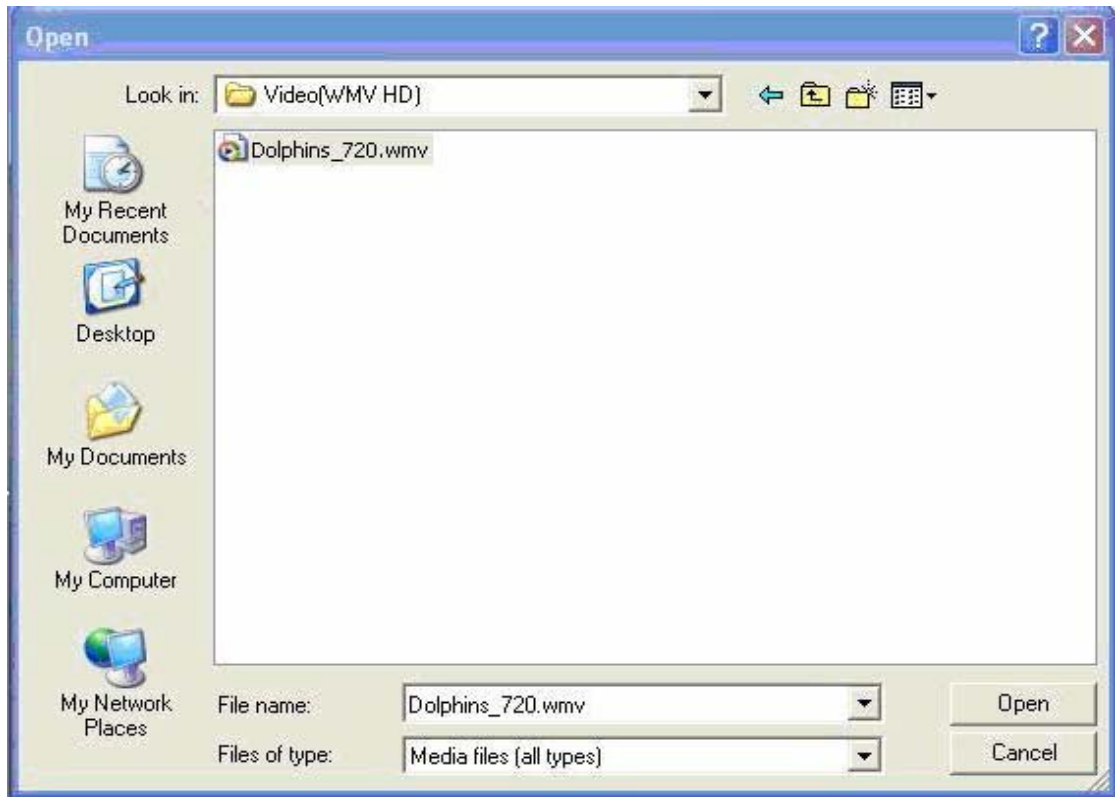
### 3.3 Start/ Stop Playing Video

Supported Video Formats: MPG 1/2, Divx 3/4/5, XviD(MPEG4)


Click  to switch to Video Mode.

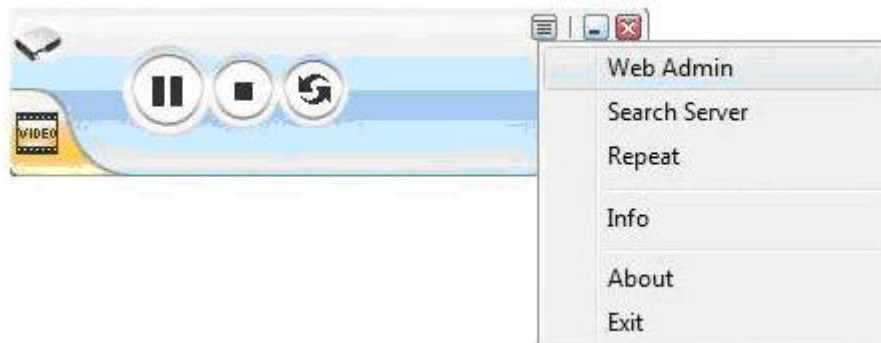


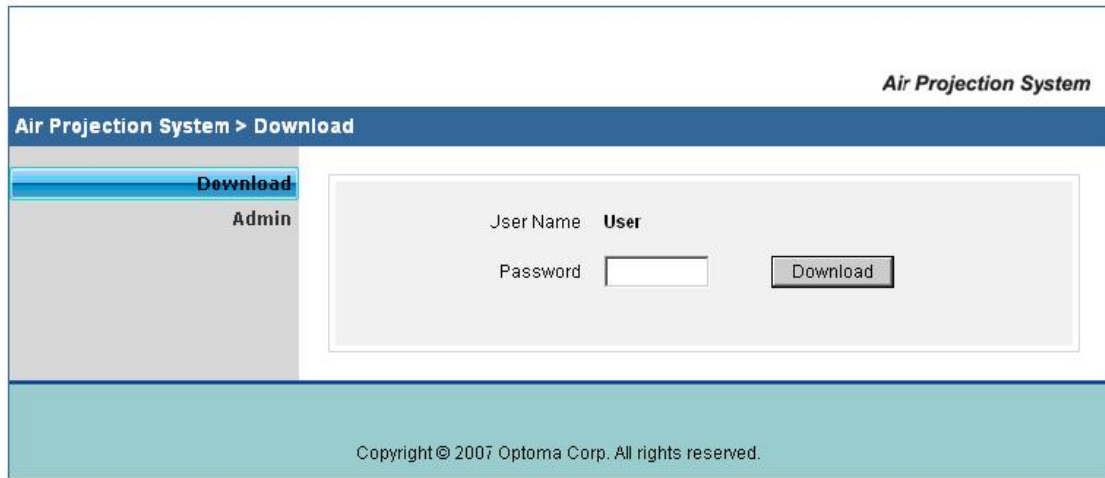
Click  to browse for video files.



### 3.4 Administrator Page

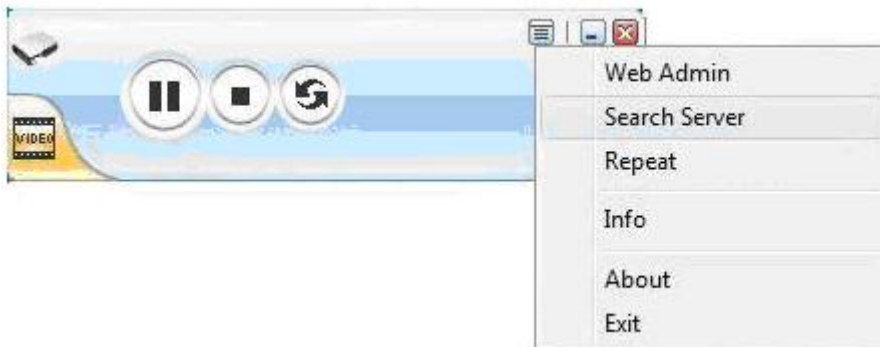
Click  to open the function menu and select "Web Admin" to access the management webpage. The functions of this webpage will be described on next chapter.





### 3.5 Searching for a server

Click "Search Server" to search for wireless projector again.



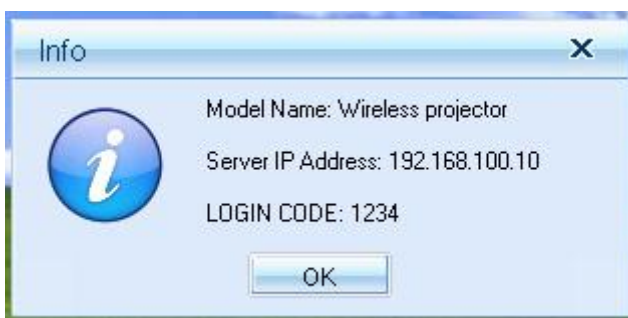
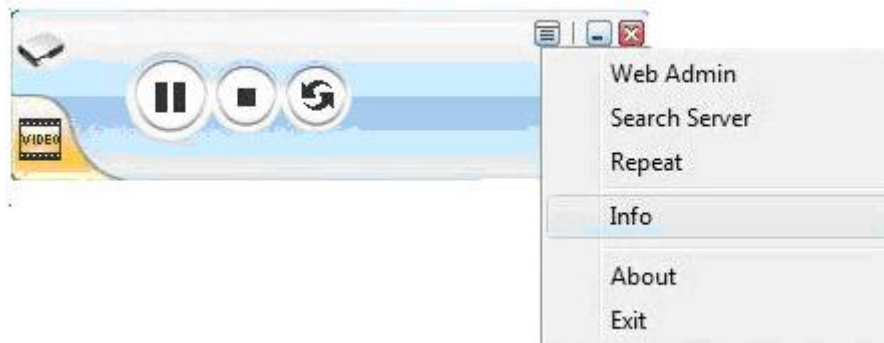
### 3.6 Repeat

Click "Repeat" to enable/disable video repeat capability.

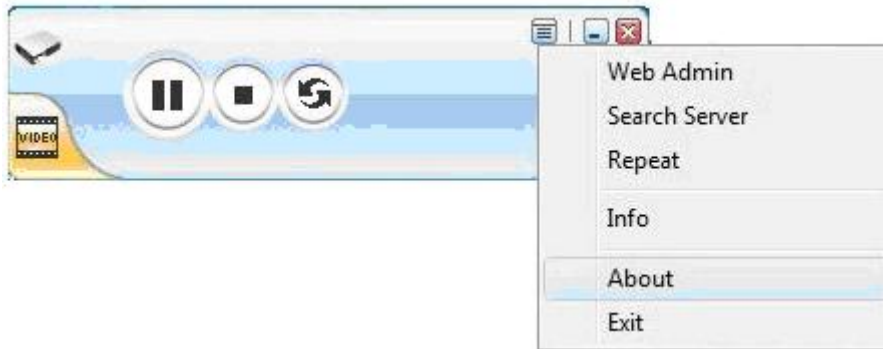


### 3.7 System Information


Click "Info" to show the system information, which will include the product model number, IP address and Login Code.



### 3.8 About



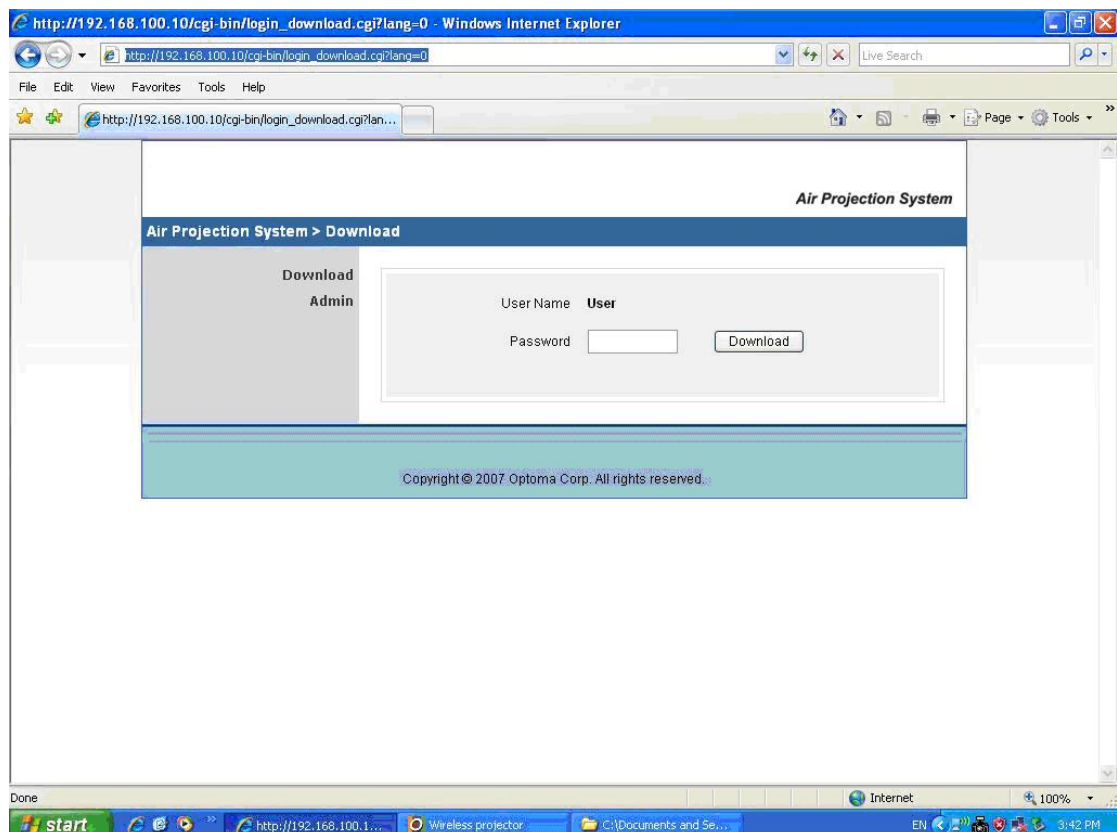
### 3.9 Exit Program

Click  to exit this program.

## 4. Web Management

### 4.1 Home page

1. Ensure the projector is switched on, and that the personal computer (PC) / notebook has connected successfully to the wireless projector WLAN network (as described in Section 2)
2. Open your web browser, ensure "Wireless projector" is connected and it will automatically take you to the wireless projector home page
3. If it does not automatically go to the page, enter the IP address that is provided on the projected screen into your web browser
4. The default IP is 192.168.100.10



## 4.2 Download Software

1. Press "Download" button to download the software, leave the password box blank.



2. You can either save the file first to implement later or execute this program immediately.



3. Follow the Installation Wizard instructions until the installation process is completed.
4. The "Windows Security Alert" will appear if the program is blocked by a Windows' firewall. Press "Unblock" to continue with the installation.
5. Once the installation has completed, a shortcut will appear on the desktop of your PC/ notebook.

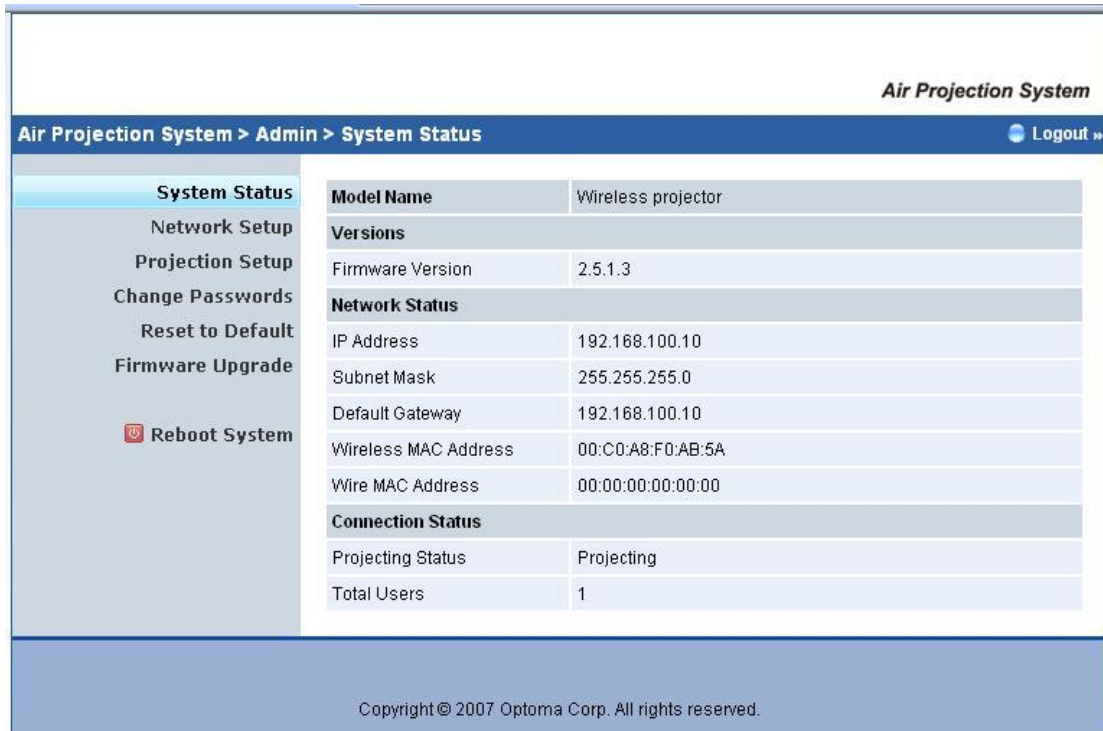


### 4.3 Administrator Login Page



1. Follow instructions in section 4.1
2. Click "Admin" on the side panel on the left side of the webpage to get to the administrator login page. Once there, enter the password to access the administration section of the site.
3. The password's default value is "admin".

## 4.4 System Status



The screenshot shows the 'System Status' page in the Air Projection System Admin interface. The page title is 'Air Projection System > Admin > System Status'. A 'Logout' button is visible in the top right. A left-hand navigation menu includes options like 'System Status', 'Network Setup', 'Projection Setup', 'Change Passwords', 'Reset to Default', 'Firmware Upgrade', and 'Reboot System'. The main content area displays system information in a table format:

<b>Model Name</b>	Wireless projector
<b>Versions</b>	
Firmware Version	2.5.1.3
<b>Network Status</b>	
IP Address	192.168.100.10
Subnet Mask	255.255.255.0
Default Gateway	192.168.100.10
Wireless MAC Address	00:C0:A8:F0:AB:5A
Wire MAC Address	00:00:00:00:00:00
<b>Connection Status</b>	
Projecting Status	Projecting
Total Users	1

Copyright © 2007 Optoma Corp. All rights reserved.

\*\*\* Click 'System Status' to show the current system status, including the following settings.

Model Name: Product model name

Versions:

- Firmware version no.: Product firmware version number

Network Status:

- IP address : IP address of the wireless projector.
- Subnet Mask
- Default Gateway
- Wireless MAC address
- Wire MAC address

Connection Status:

- Projecting status: Will be either "Waiting to project" or "Projecting"
- Total Users: It shows how many users login into wireless projector.

## 4.5 Network Setup

Air Projection System

Air Projection System > Admin > Network Setup
Logout

System Status

Network Setup

Projection Setup

Change Passwords

Reset to Default

Firmware Upgrade

Reboot System

**IP Setup**

Obtain an IP address automatically  Use the following IP address:

IP Address:

Subnet Mask:

Default Gateway:

---

**DHCP Server Setup**

Auto  Disable

Start IP:

End IP:

---

**Wireless Setup**

Wireless LAN:  Enable  Disable

Region:

SSID: Wireless Projector

SSID Broadcast:  Enable  Disable

Channel:

WEP:

Key:

---

**GateKeeper**

All Pass  All Block  Internet Only(port 80 & 443)

\*\*\* Click 'Network Setup' button.

### IP Setup:

- You can select "obtain IP address automatically" or "Use the following IP address"
- IP Address: The default value is 192.168.100.10.
- Subnet Mask: The default value is 255.255.255.0
- Default Gateway: The default value is 192.168.100.10

### Wireless Setup:

- Wireless LAN : You can select "Enable" or "Disable".
- Region: Worldwide

- SSID: SSID string, max. Length is 32 bytes.
- SSID Broadcast: You can select "Enable" or "Disable"
- Channel: To set fixed channel or Auto. "Auto" means after powering on the wireless projector system, it will scan all wireless channels and select one clear channel automatically.
- WEP: You can disable the WEP key or select 64-bit or 128-bit in an ASCII or HEX string.
- Key: If WEP is enabled, set the key value according to the WEP mode you selected.

Gatekeeper:

- All Block, All Pass or Internet Only

Apply: press button to select this mode.

Cancel: press button to abort action.

Back: back to operating mode main menu

## 4.6 Projection Setup



**Air Projection System**

**Air Projection System > Admin > Projection Setup** Logout »

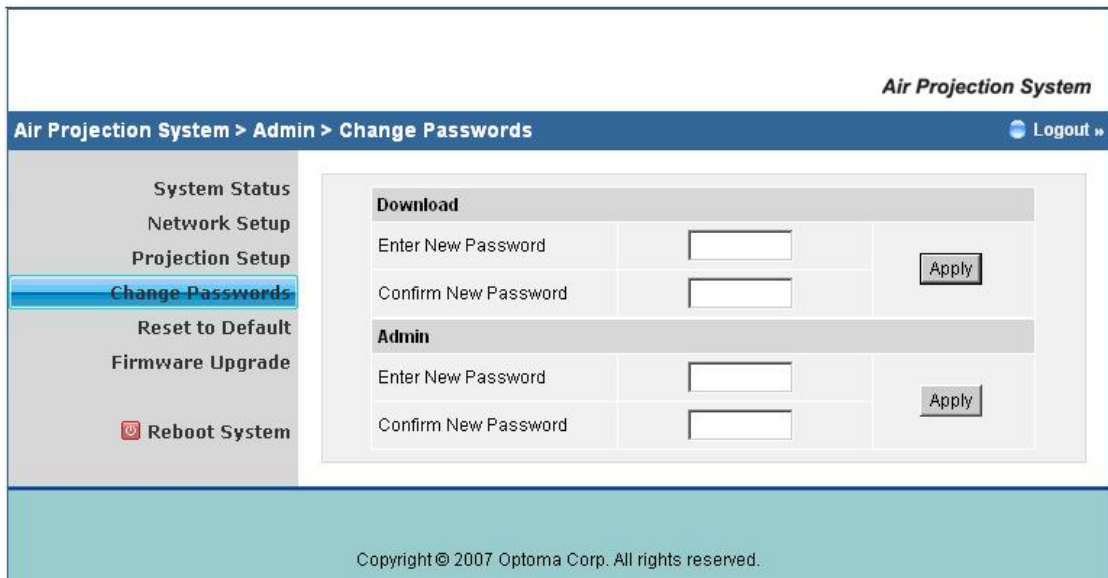
<b>Projection Setup</b>	Resolution	XGA (1024X768) ▾
	Color Depth	High (32 bit) ▾
	Screen Refresh Rate	75 Hz ▾
	Login Code	<input type="radio"/> Disable <input checked="" type="radio"/> Random <input type="radio"/> Use the following code <input type="text"/>

Copyright © 2007 Optoma Corp. All rights reserved.

\*\*\* Click 'Projection Setup' button.

- Resolution: 1024x768, 1280x768 and 800x600.
- Color Depth: provides WPS output with 16-bit or 32-bit color depth.  
This depends on your PC settings.
- Screen Refresh Rate: This is VGA output refresh rate. It provides 60 Hz and 75Hz to match the different kinds of projectors.
- Login Code: You can select "Disable", "Random", or "Use the following code" to set a specified 4-characters Number.
- Apply: Confirmation and Save modifications
- Cancel: Cancel all the modifications

## 4.7 Change Passwords



The screenshot shows the 'Air Projection System > Admin > Change Passwords' page. On the left is a navigation menu with options: System Status, Network Setup, Projection Setup, **Change Passwords** (highlighted), Reset to Default, Firmware Upgrade, and Reboot System. The main content area is divided into two sections: 'Download' and 'Admin'. Each section contains two text input fields labeled 'Enter New Password' and 'Confirm New Password', followed by an 'Apply' button. The footer contains the text: Copyright © 2007 Optoma Corp. All rights reserved.

\*\*\* Click 'Change Password' button to change password values.

- Enter New Password: Enter a new password for each category.
- Confirm New Password: Re-confirm the new password.
- Apply: Confirmation and Save modifications.

## 4.8 Reset to Default

Air Projection System

Air Projection System > Admin > System Status
Logout »

<ul style="list-style-type: none"> <li>System Status</li> <li>Network Setup</li> <li>Projection Setup</li> <li>Change Passwords</li> <li style="background-color: #0056b3; color: white; padding: 2px;">Reset to Default</li> <li>Firmware Upgrade</li> <li style="padding: 2px;"> Reboot System</li> </ul>	<table border="1" style="width: 100%; border-collapse: collapse;"> <tr> <td style="background-color: #f2f2f2;"><b>Model Name</b></td> <td>Wireless projector</td> </tr> <tr> <td colspan="2" style="background-color: #f2f2f2;"><b>Versions</b></td> </tr> <tr> <td>Firmware Version</td> <td>2.5.1.3</td> </tr> <tr> <td colspan="2" style="background-color: #f2f2f2;"><b>Network Status</b></td> </tr> <tr> <td>IP Address</td> <td>192.168.100.10</td> </tr> <tr> <td>Subnet Mask</td> <td>255.255.255.0</td> </tr> <tr> <td>Default Gateway</td> <td>192.168.100.10</td> </tr> <tr> <td>Wireless MAC Address</td> <td>00:C0:A8:F0:AB:5A</td> </tr> <tr> <td>Wire MAC Address</td> <td>00:00:00:00:00:00</td> </tr> <tr> <td colspan="2" style="background-color: #f2f2f2;"><b>Connection Status</b></td> </tr> <tr> <td>Projecting Status</td> <td>Projecting</td> </tr> <tr> <td>Total Users</td> <td>1</td> </tr> </table>	<b>Model Name</b>	Wireless projector	<b>Versions</b>		Firmware Version	2.5.1.3	<b>Network Status</b>		IP Address	192.168.100.10	Subnet Mask	255.255.255.0	Default Gateway	192.168.100.10	Wireless MAC Address	00:C0:A8:F0:AB:5A	Wire MAC Address	00:00:00:00:00:00	<b>Connection Status</b>		Projecting Status	Projecting	Total Users	1
<b>Model Name</b>	Wireless projector																								
<b>Versions</b>																									
Firmware Version	2.5.1.3																								
<b>Network Status</b>																									
IP Address	192.168.100.10																								
Subnet Mask	255.255.255.0																								
Default Gateway	192.168.100.10																								
Wireless MAC Address	00:C0:A8:F0:AB:5A																								
Wire MAC Address	00:00:00:00:00:00																								
<b>Connection Status</b>																									
Projecting Status	Projecting																								
Total Users	1																								

Copyright © 2007 Optoma Corp. All rights reserved.

\*\*\* Click 'Reset to Default' button to restore factory default settings

Air Projection System

Air Projection System > Admin > Reset to Default
Logout »

<ul style="list-style-type: none"> <li>System Status</li> <li>Network Setup</li> <li>Projection Setup</li> <li>Change Passwords</li> <li style="background-color: #0056b3; color: white; padding: 2px;">Reset to Default</li> <li>Firmware Upgrade</li> <li style="padding: 2px;"> Reboot System</li> </ul>	<div style="background-color: #f2f2f2; padding: 10px; border: 1px solid #ccc;"> <p>Reset to Default This will restore the device to the factory default settings.</p> <div style="margin-top: 10px;"><input type="button" value="Apply"/></div> </div>
---	--

Copyright © 2007 Optoma Corp. All rights reserved.

Apply: Confirmation and action.



\*\*\* To restore Factory Default Settings externally, follow the following procedure:

1. Close the Wireless Projector application program and then turn off the projector completely by removing AC supply to projector.
2. Ensure the wireless module is turned off (no power to the LED), press and hold the 'Reset' button.
3. Turn on the projector.
4. Wait for 10 seconds or more, then release the 'Reset' button
5. This will reset the Optoma Wireless Presentation System to the default settings.

## 4.9 Firmware Upgrade

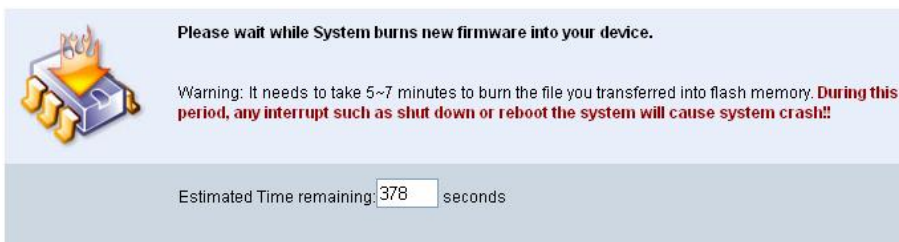
Air Projection System

Air Projection System > Admin > Firmware Upgrade
Logout

System Status	Firmware Version	2.5.1.3
Network Setup	Release Date	20071210
Projection Setup	After you apply "Upgrade" button, projecting function will be terminated.	
Change Passwords	File Name	<input type="text"/> <input type="button" value="瀏覽..."/>
Reset to Default	<input type="button" value="Upgrade"/>	
Firmware Upgrade		
<input type="button" value="Reboot System"/>		

Copyright © 2007 Optoma Corp. All rights reserved.

1. Ensure you have acquired the latest firmware to download.
2. Follow instructions in section 4.1.
3. Click 'Firmware Upgrade' button to upgrade the firmware.
4. Click 'Browse' to specify file name you want to upgrade.
5. Click 'Upgrade' to start.
6. A warning message with the estimated for completion will appear on the screen.



7. LED light on the wireless module will turn from green to red.
8. Once the firmware upgrade is complete, you will receive a message stating that the process has been complete, and the LED light on the wireless module will turn back to green.



9. Upon the completion of the firmware upgrade, manually power off the projector and power on again.

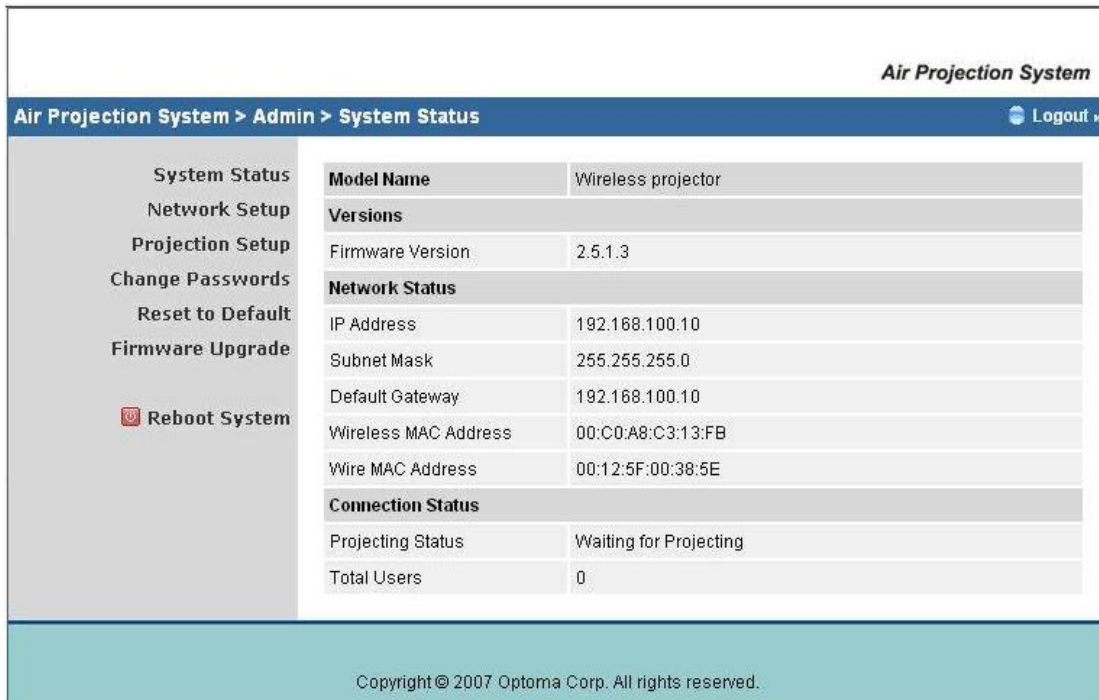
Warning: Do not power off wireless module while the firmware upgrade is in progress. This will cause the wireless projector to fail.

## 4.10 Reboot System



- \*\*\* Click 'Reboot System' button to restart the system
- Reboot: Restarts the system automatically.

## 4.11 Logout



<b>Model Name</b>		Wireless projector
<b>Versions</b>		
Firmware Version	2.5.1.3	
<b>Network Status</b>		
IP Address	192.168.100.10	
Subnet Mask	255.255.255.0	
Default Gateway	192.168.100.10	
Wireless MAC Address	00:C0:A8:C3:13:FB	
Wire MAC Address	00:12:5F:00:38:5E	
<b>Connection Status</b>		
Projecting Status	Waiting for Projecting	
Total Users	0	

- \*\*\* Click 'Logout' button to return back to the Web homepage.